

bauma 2016

SHOW PREVIEW



**What to see at bauma 2016:
The Definitive Guide**

Published By:

GCMA
GLOBAL CONSTRUCTION
MEDIA ALLIANCE

**WORLD
HIGHWAYS**

**AGGREGATES
BUSINESS**

**CONSTRUCCIÓN
PAN-AMERICANA**

**MINERÍA
PAN-AMERICANA**

**CARRETERAS
PAN-AMERICANAS**

**CONSTRUCTION
EQUIPMENT**

ROADS&BRIDGES

Soilmec's productive cranes

Soilmec is completing its range of heavy-duty cranes with the introduction of the powerful SC-50 HD and SC-120 HD models.

With the addition of these two cranes the range now comprises the SC-50, SC-70, SC-80, SC-90, SC-120 and SC-135 models. As with the existing machines the two new cranes are designed for use in tough working conditions and for applications such as diaphragm wall grabbing, hydraulic rotary boring, pile-driving, dragline work, clamshell duties or dynamic compaction.

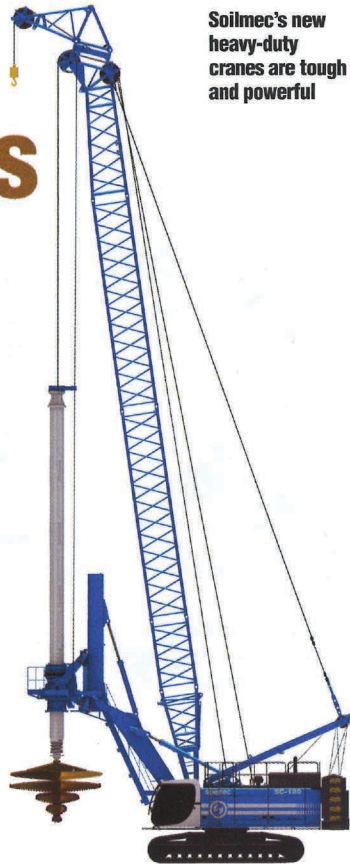
The models are fitted with Soilmec's new H-cab, which

features good all-round visibility and high operator comfort. A key feature for the operator is the sophisticated touchscreen DMS package, which monitors working functions and parameters.

This system allows full monitoring, recording and analysis of operation, with dedicated software providing full data handling and storage capabilities.

Customers can specify the SC machines with either Tier 4 Final/Stage IV compliant diesels or Tier 3/Stage IIIA engines, depending on the location where the units will be used.

www.soilmec.it



Soilmec's new heavy-duty cranes are tough and powerful

Vertical advances from Haulotte

French access manufacturer Haulotte is adding the Star6 to its vertical mast access range. The machine joins the larger Star8 and Star10 launched last year, with new AC motors delivering smoother performance.

A larger platform is included and Haulotte has added forklift slots in the side of the machine for easier movement. With three-stage hydraulic lift rams there is no requirement for chains or cables, so no regular maintenance of the lift mechanism.

The Star lifts are among the first machines to feature Haulotte's ACTIV diagnostic screen, built into the base structure of the platform. ACTIV is to be fitted as standard across the platform range, with ACTIV 2 on larger models. www.haulotte.com

Liebherr is working with Teufelberger to develop an innovative fibre rope

Liebherr's new rope

Liebherr is working together with Teufelberger to develop a high-strength fibre rope for use with cranes.

This innovative rope will be suitable for use in tower cranes, mobile cranes and crawler cranes and Liebherr is carrying out field tests at present on a number of different cranes. Austrian firm Teufelberger is a leader in the field of crane ropes. This project is being carried out jointly between Liebherr engineers from various divisions, as well as Teufelberger.

The high-strength fibre

rope is being developed after many years of collaborative work between Liebherr and Teufelberger. This is based on experience in rope applications and winch technology for multilayer spooling and the development and manufacture of fibre and steel ropes.

The partners say that high-strength fibre ropes offer potential in comparison to steel ropes, being lighter and more durable. Load capacities can be increased thanks to the 80% reduction in the weight of the rope, which also allows reduction in mass of the hook

block. In addition, the ropes no longer need to be lubricated.

This rope weight saving can boost the size of the load being lifted. This allows for simplified assembly and disassembly of the crane due to the reduced rope weight, while increasing service life.

The high-strength fibre rope is said to be wear-resistant and lasts longer than steel rope. The extended service life reduces the number of rope changes, while the crane operator can easily and safely identify when the rope needs to be changed. www.liebherr.com

Hinowa updates popular access platform

Hinowa is replacing its Goldlift 14.70 IIS aerial platform with the Lightlift 15.70 Performance IIS, the fourth model in the Performance IIS range.

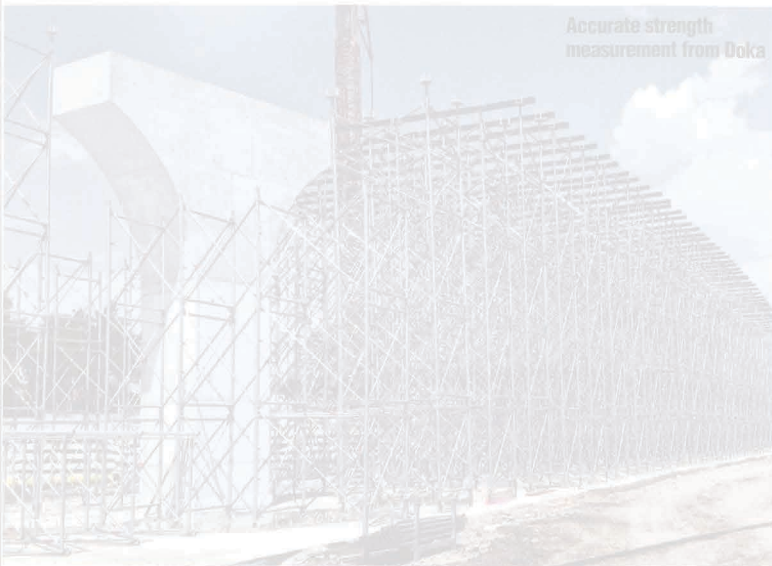
The machine has a maximum working height of 15.4m with a horizontal outreach of up to 6.6m. Basket capacity is 230kg throughout

the working envelope and the basket comes with rotation as standard.

Three power sources are available, including a 7.5kW Hatz

diesel, an 8.7kW Honda petrol engine and a lithium-ion battery pack for emissions-free operation. www.hinowa.com

Doka's d3 tower goes east



Accurate strength measurement from Doka

With the Load-bearing tower d3, Doka is expanding its product portfolio for Southeast Asia and the Middle East.

Load-bearing tower d3 is a product enhancement of a successful Doka load-bearing system and combines the benefits of existing systems. The d3 is designed for particularly tall shoring heights and high loads. Applications are in building construction as well as civil and industrial construction.

It is not required to dismantle and reassemble the shoring towers for repositioning and manual reposition is possible

with the help of wheels. Height can be adjusted as hot dip galvanised frames are available in 0.9m, 1.2m and 1.8m heights. Height adjustment is possible to the last millimetre.

Also, the Doka UniKit shoring system was developed for the Latin American markets. Doka UniKit is the ideal modular system for transferring heavy loads. With the modular system grid, large-volume load-bearing structures are produced quickly and easily. It allows for a variety of uses such as infrastructure and power plant builds.

www.doka.com

Innovative formwork

Weckenmann Anlagentechnik says the response from selected customers was exceptionally positive, when it presented its "innovative concept" of transportable formwork, the Mobile Battery Mould (MBM).

It is a system for the production of precast concrete elements in the immediate vicinity of the construction site, and Weckenmann Anlagentechnik

says that two large construction companies in Singapore opted for the MBM concept independently of one another. Both production plants have started operations successfully. A special feature of the MBM is the controllable trailer, which improves the trailer's manoeuvrability. This is especially important after the conclusion of the work, when the mould sometimes has to

find its way out of very confined conditions on the site.

"The MBM offers the construction site all the advantages of the precast technology and avoids the disadvantages, which are caused in particular by additional transport. At the same time it meets the requirements of the construction site where restricted space conditions prevail; the

number of qualified staff is limited and the environmental conditions always represent certain challenges," says Weckenmann.

"The mobile field factory from Weckenmann can be an ideal solution for large building sites: its investment costs are manageable, it produces just-in-time and it is enormously flexible."

www.weckenmann.de

Soilmec's versatile piling rigs

Soilmec is offering a series of versatile new piling rigs that can handle a range of duties. The improved Blue generation range is built along modular lines.

The range includes the new SR-45, SR-75, SR-95, SR-125 and DR-145 models, all of which can handle large diameter piling applications. Although the machines are being introduced, they have already been tested extensively by Soilmec's sister company, Italian contractor Trevi. Vice president Federico Pagliacci said, "If it's a new machine for the market it's not new for use because we have already tested it."

The SR-45 can be specified with a short 8.5m mast for use

in urban applications, allowing it to work under power lines or elevated roadways in congested city centres. And this short mast design has been proven by Trevi on a project in Manila. The short mast variant of the SR-45 can drive 2.5m diameter piles to depths of 19m, while the standard version offers maximum piling depths of 60m.

Pagliacci said that the development of this new piling rig range received assistance from Porsche Consulting, which provided expertise for design and production. The same cab design is used across the range and the larger rigs have bigger undercarriages. The new cabs offer increased visibility and comfort and are equipped with

the firm's sophisticated drilling mate system (DMS), which allows the operator to deliver high-quality work consistently.

The firm says that the rigs have Tier 4 Final/Stage IV diesels as standard, although other engines can be used for less regulated markets where low sulphur fuels are not available. The new designs are more powerful as well as being more stable in operation and lighter than the models they replace.

www.soilmec.it



Soilmec's new piling rigs offer high performance