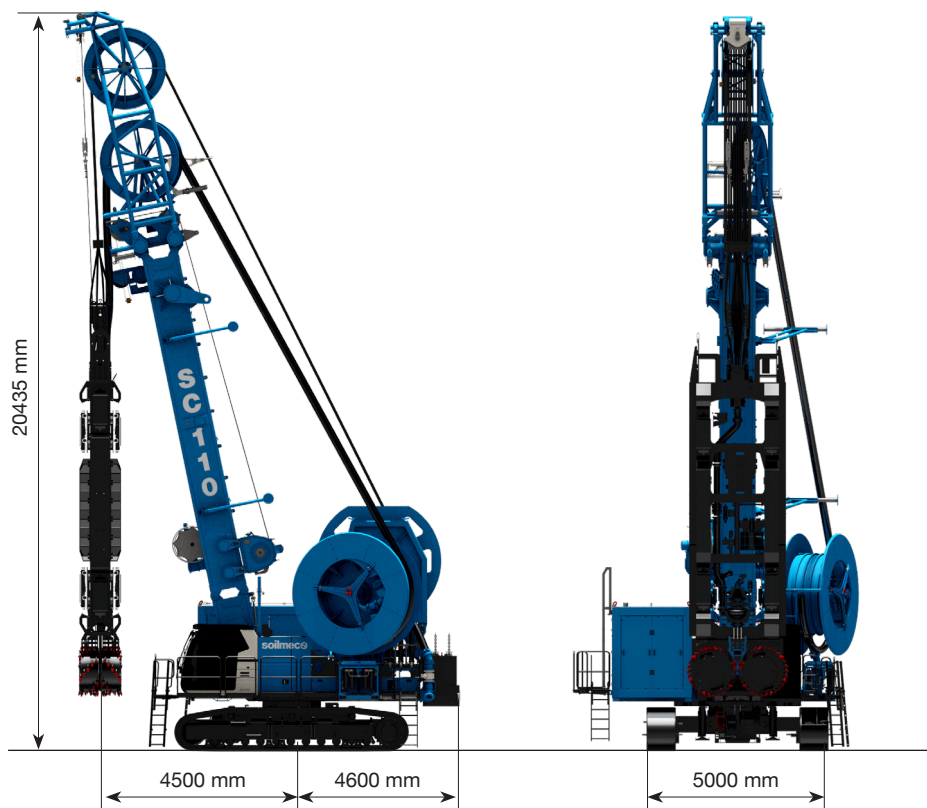




URBAN

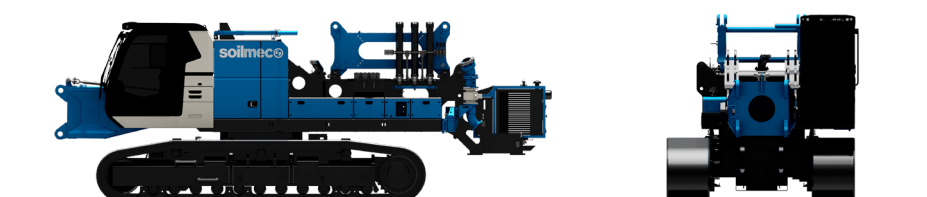
soilmeco 
Drilling and Foundation Equipment

SC-110 Urban



Maximum depth		80 m	262 ft
Power rating	Tier 4F / Stage 5	563 kW	755 HP
	Electric drive (opt.)	500 kW	670 HP
Winch line pull		300 kN	67440 lbf
Working radius		4500 - 6000 mm	177 - 236 in
Cutting module		SH-35	SH-35
Trench width		650 - 1500 mm	26 - 59 in
Trench length		2800 - 3200 mm	110 - 126 in
Module rotation		135° (-45°/+90°)	135° (-45°/+90°)
Flow rate		450 m3/h	118877 gallon/h
Cutting motor torque		2 x 90 kNm	2 x 66380 lbf*ft
Total operating weight		170000 kg	374800 lb

Transport

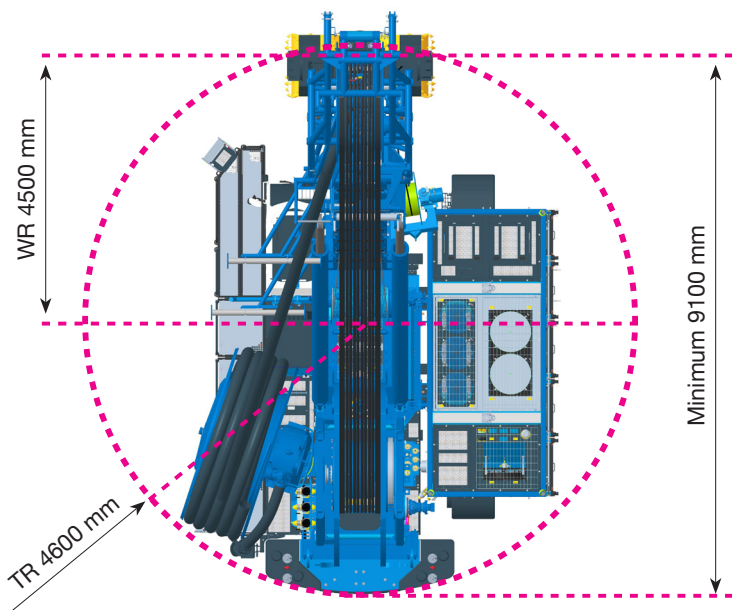


Weight with crawlers	53800 kg	118600 lbs
Weight w/o cralers and reel supports	32300 kg	71200 lbs
Length x Width x Height	9460 x 3500 x 3500 mm	1554 x 138 x 138 in

Includes base carrier and auxiliary power pack for traveling and loading

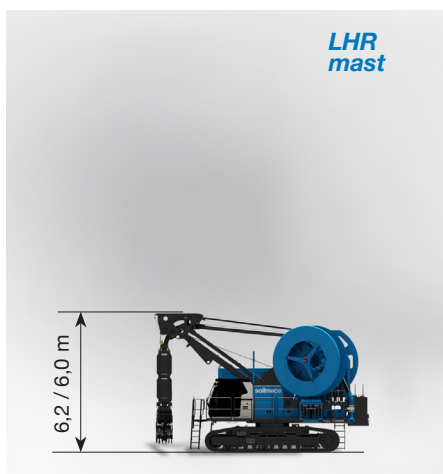
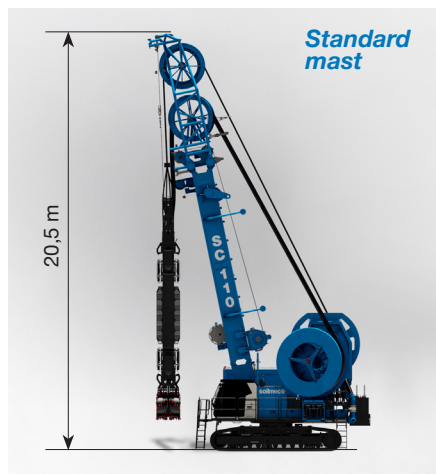
Compact Design

Ideally suited for construction sites with limited space and metropolitan areas with strict noise requirements.



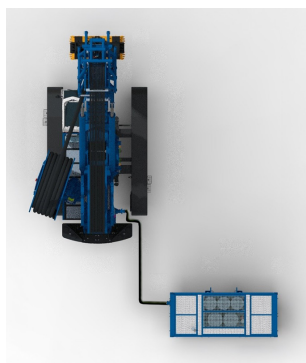
Modularity

Two machines in one! Easy conversion from standard to low head-room configuration.



Maximum flexibility

Developed to perfectly suit any construction site layout.



Remotely Connected
on the ground



Side Mounted



Rear Mounted



soilmec.com

This brochure has been edited and distributed by SOILMEC Spa. The present document cancels and override any previous ones. This brochure shall not be distributed, reproduced or exhibited without SOILMEC Spa. authorization in accordance with to SOILMEC web site disclaimer condition.