

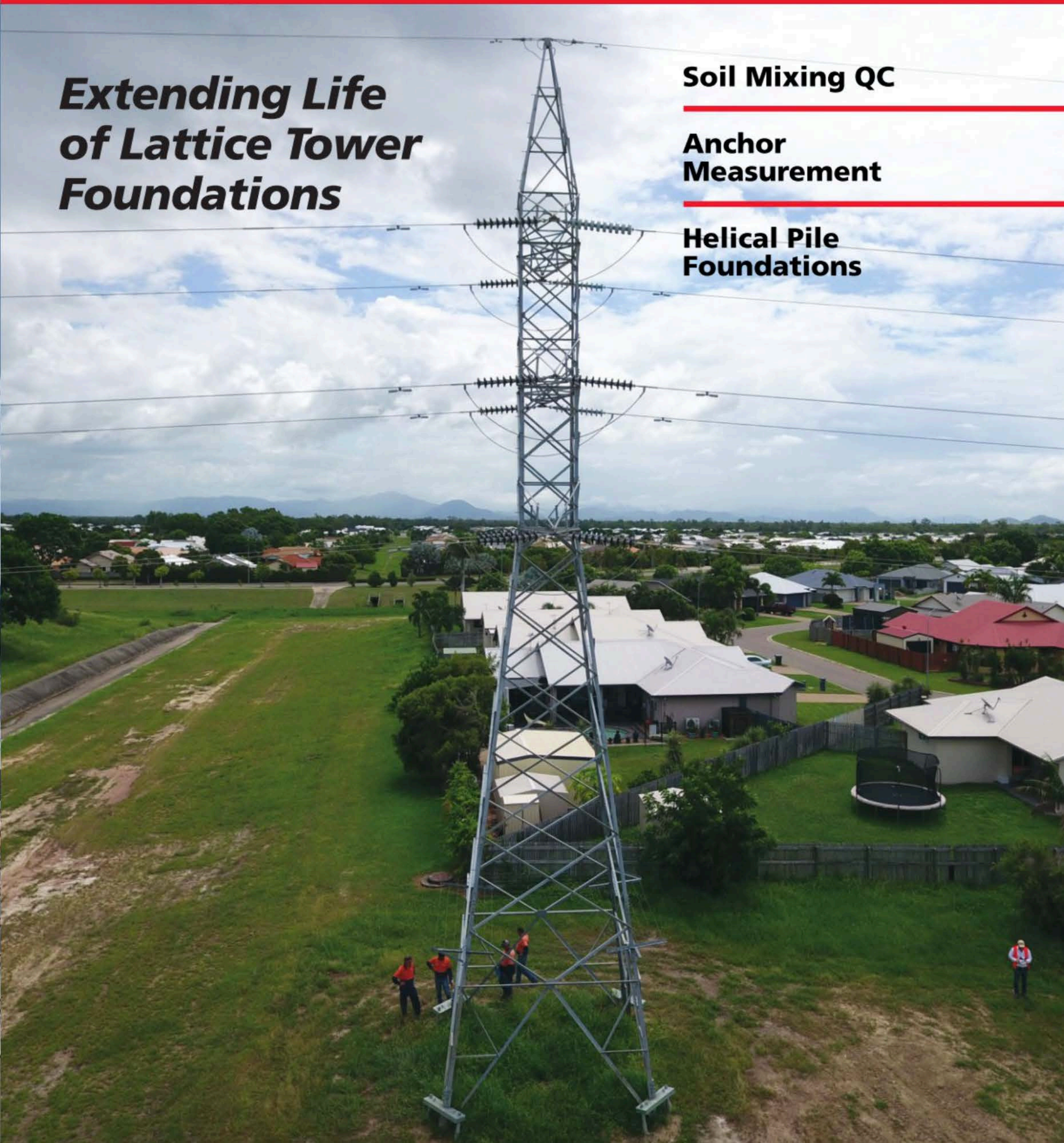
DEEP FOUNDATIONS

Extending Life of Lattice Tower Foundations

Soil Mixing QC

**Anchor
Measurement**

**Helical Pile
Foundations**



Menard Group USA will be working with general contractor Skanska-Walsh Design JV for the Port Authority of NY and NJ to provide support for a double-sided MSE wall bridge approach at LaGuardia Airport. Menard will install almost 200 controlled modulus column rigid inclusions to depths of 50 to 80 ft (15 to 25 m) into a combination of soil types to support the approximately 250 ft (76 m) long approach. The project is a part of a multi-billion dollar facelift to the existing Central Terminal Building, helping to transform it into state-of-the-art Terminal B.

DYWIDAG-Systems International USA (DSI) announced that its Grade 100 THREADBAR report has been reissued by the International Code Council Evaluation Services to include bar sizes Nos. 11, 14, 18 and 20, and confirms that its Grade 100 threadbar has a minimum 100 ksi yield strength in both tension and compression. This is the only Grade 100 bar product conforming to acceptance criteria AC237 and specification ASTM A615-15 and, therefore, offers unmatched benefits in terms of strength, savings associated with the use of high-strength bars and quality. Savings result from lower fabrication, installation (both labor and crane time) and freight costs due to the lower overall weight as fewer reinforcing bars are required. The Grade 100 threadbar is produced under an exclusive partnership with Gerdau in its St. Paul, Minn. mill facility using fully domestic USA steel, thus conforming to all Buy America requirements. The report can



be found at http://www.icc-es.org/Reports/pdf_files/load_file.cfm?file_type=pdf&file_name=ESR-3367.pdf

Soilmec hosted its Open House 2017 in Italy for more than 1,000 customers, distributors and employees from nearly 70 countries. Another 5,000 customers participated through live streaming of the events. The three-day event was devoted mainly to the latest innovative technologies and services for deep foundations or soil consolidation. The event opened with a conference at which industry experts discussed present and future scenarios for special foundations. The second day focused on the “discovery” of Soilmec 4.0 through guided tours of the core divisions of the company, presentations of new machines in the test field, and of the DMS 4.0 system, which allows global secure access of the state, performance and location of the equipment through the use of an Internet browser and PC, notebook, tablet or smartphone.

BAUER Maschinen Group hosted close to 2,200 visitors from almost 80 nations at its 21st in-house exhibition from May 6-8 in the courtyard at Bauer headquarters in Schrobenhausen, Germany. The theme of the meeting was “Drilling Deep and Aiming High.” Equipment displayed at the event included PremiumLine BGs, which, together with its CSM unit, are approximately 42 m (138 ft) tall. The CBC 30 compact cutter was also exhibited, which, with its modern low-headroom configuration, guarantees mixing depths of up to 80 m (262 ft) even though it is only 8.7 m (28.5 ft) tall. In addition to a wide range of BAUER rigs, other exhibits featured equipment from RTG Rammtechnik, KLEMM Bohrtechnik, PRAKLA Bohrtechnik, MAT Mischanlagentechnik and Pileco. A highlight of the show was a 50 m (165 ft) long skywalk up to 8 m (28 ft) in height, which afforded visitors a panoramic view of the rigs.



Soilmec Open House 2017



BAUER Maschinen Group exhibition